



## Prairie City SVRA Improvement Group Meeting Tuesday, 15 November 2022

**Location:** In-person and Zoom, Meeting ID **466 658 5564**

**Time:** 5:00- 6:30 PM PST

**Attendees:** 24 attendees including, Parks staff, public and non-profit stakeholders

**Prairie City Staff:** Peter Jones, Joleen Ossello, Nick Fox, McKenzie Boring, Taylor Espenshade, Paul Scharffer, Tony Guzman, Steve Gorman, Ed Santin

**Gold Fields District or other CSP Staff:** Nathan Harper, Meghan Sullivan, Noelle Breitenbach

**Stakeholders:** All Star Karting (D. Durbin Sr.), Specialized (G. Martini), Almost Racing (Rallycross), California Off-Road Vehicle Association (A. Granat)

**Meeting Facilitator:** Joleen Ossello

**Meeting Moderators:** Nick Fox, McKenzie Boring

**Next Meeting Date:** February 2023. The goal is for these meetings to occur quarterly. Date of next meeting will be announced when confirmed.

### Agenda:

- 5:00 - 5:10** Introduction by State Park Interpreter I, Joleen Ossello
- Welcome and review of Zoom features
- 5:10 - 5:15** Project updates from Prairie City Sector Manager, Peter Jones
- Folsom Ranch Development and New Event Entrance
  - New Intermediate Track
- 5:15 – 5:45** Project updates from Environmental Scientists, Mckenzie Boring and Taylor Espenshade
- Route and Trail Management Plan Update
  - 4x4 Area Rock Crawl Project Update
  - Wildlife Habitat Protection Plan and Soil Conservation Plan Updates
  - Announcement of Partial Wet Weather Policy
  - Seasonal Wetland Exclusion Fence in Zone 1
- 5:45 – 5:55** Outreach and Education from State Park Interpreter I, Joleen Ossello
- Outreach programming, special events, social media & new staff
- 5:55 – 6:05** Updates from Maintenance Supervisor, Paul Scharffer
- Sediment Basin Cleanout
  - 4x4 Rock Crawl Improvements
  - Intermediate Track Irrigation
- 6:05 – 6:15** OHV Update from Supervising State Park Peace Officer, Tony Guzman
- RED sticker season (open), Air Resources Board 2025 schedule
  - 2022 & newer competition motorcycles, how & where to ride at PC and ARB/DMV registration changes
  - What is a “Closed Course” and how Racing motorcycles during special events can operate
  - What is an “ROV” and what are the changes for the new Polaris PRO R (2,000 cc) SxS
  - Encourage rider safety by attending DBS/ASI/ROHVA training course
- 6:15 – 6:30** Public Question & Comment Period

## Summary:

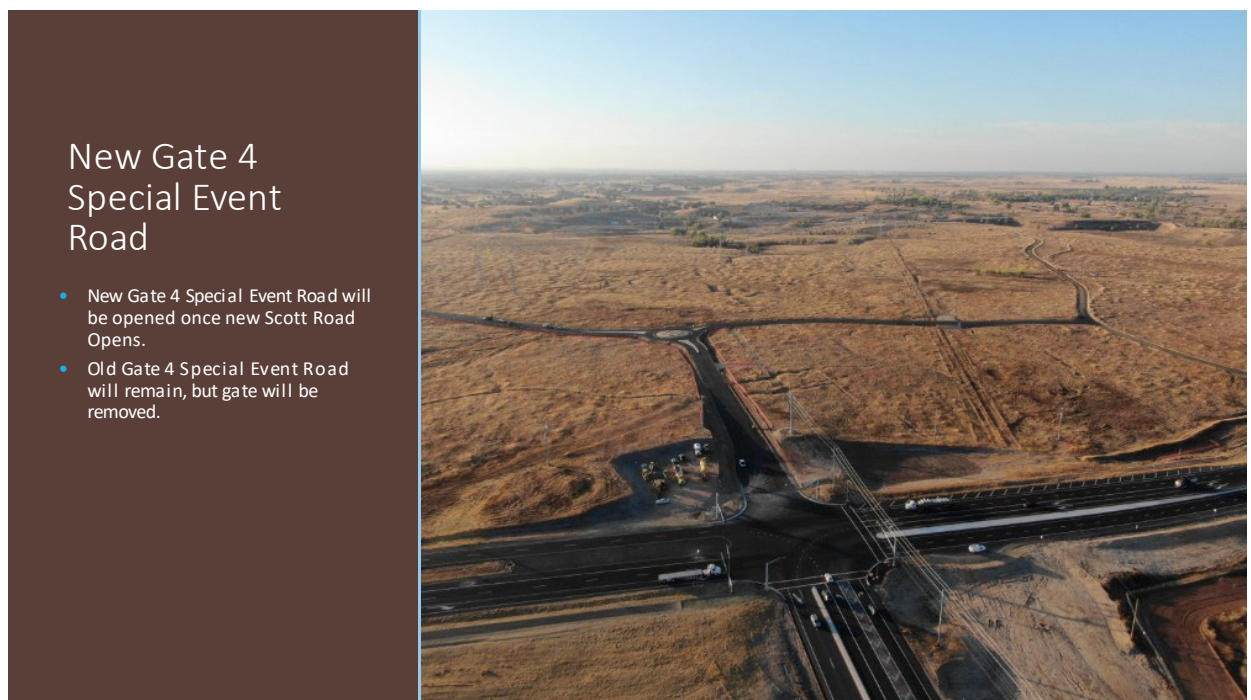
---

- **Welcome and Introduction - Joleen Ossello**

- Purpose of meeting is to engage and solicit feedback with users and stakeholders on current and future park projects and developments.
- Review of Zoom features, agenda, and speakers.

- **Folsom Ranch Development and New Event Entrance- Peter Jones, Sector Manager**

- Residential development south of HWY 50 is well underway with and with that comes some changes and improvements to traffic flow surrounding Prairie City SVRA. The expressway project spanning from Highway 99 to El Dorado Hills includes reducing spur roads that tie into Grant Line Road and later White Rock Road to improve traffic flow and safety.
- The old Gate 4 (special event entrance) coming directly off White Rock Road does not have sufficient traffic control and was identified by the county as a spur road to remove.
- A new portion of Scott Road has been constructed and ties into the intersection of White Rock Road and Prairie City Road. This new Scott Road spur has a roundabout. A new Gate 4 Road special event entrance is tied into the roundabout and leads into the park. The new Gate 4 Road is paved all the way to the old special event road and was designed to accommodate semis and trailers, this is a good improvement for us and will allow for easier flow in and out of the park during large special events.
- The new section of Scott Road and the new Gate 4 Road is expected to open sometime in December and will be ready for next year's larger events. The old Gate 4 Road gate off White Rock Road will be removed once the new gate and road are operational.



*Figure 1 Aerial view of new special event entrance at Prairie City Rd and White Rock Rd and Scott Road re-alignment.*

- **New Intermediate Track- Peter Jones, Sector Manager**

- The location of this track is just north of the kart track and across from our maintenance yard and sector office.
- The Intermediate Track is designed for 230cc and under motorcycles. The track is being designed for newer adult riders and kids who have outgrown the smaller tracks but are not yet ready for the larger MX Practice Track.
- The track is roughed in and set up in a counterclockwise fashion. It includes a staging area for additional day use parking. It will also have its own watering system which Paul will talk more about later in the meeting.

- We've developed and ordered the necessary signage. Eventually, and after the track has been opened, we plan to add staging area improvements including shade ramadas and picnic tables and there will be an access point into the Ehnisz Property with a crossing into Zone 1 once for improved movement throughout the park.

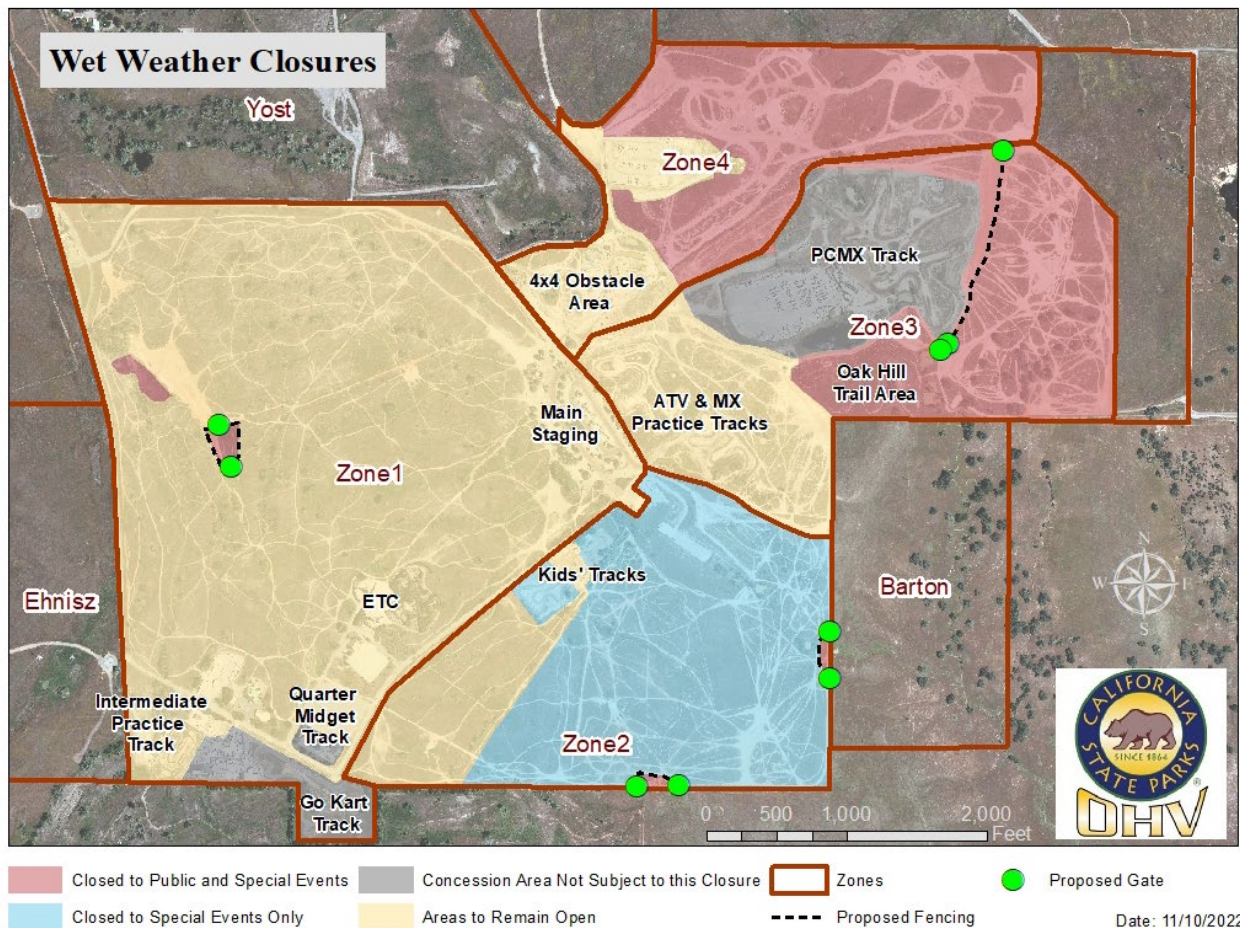


*Figure 2 Ariel view of Intermediate MX Track under construction.*

- **Route and Trail Management Plan Updates- Taylor Espenshade, Environmental Scientist**
  - PCSVRA has begun working on the Road and Trail Management Plan (RTMP). The RTMP will put recommendations from the General Plan into action, streamline the environmental review process, help to prioritize projects, and allow us to look at new recreation opportunities (especially in Ehnisz, Yost and Barton areas). We are in the initial planning steps with an internal team and will soon begin working with a consultant to develop the plan. There will be multiple opportunities for the public and stakeholders to provide input on the plan. Timeline is 18-24 months. Visit the [Folsom SRA and Folsom Powerhouse SHP RTMP website](#) to see more about what this process looks like.
- **Wildlife Habitat Protection Plan (WHPP) and Soil Conservation Plan (SCP)- McKenzie Boring, Environmental Scientist**
  - We're updating these guiding documents in response to Senate Bill 249. The WHPP document defines objectives that drive the adaptive management of the natural resource program to meet the goals in the Public Resources Code and outlines the specific management actions to implement and monitoring effort that determine if the goals have been met. The SCP provides a framework for assessing current conditions, inventorying maintenance and repair needs, and monitoring conditions over time to ensure sustainability of the facility in compliant with the 2020 Soil Standards. The WHPP underwent public comment period, and we received comments from CDFW and USFWS. The document is now going through final approval and will be posted on the website soon. The SCP is still in draft form and will undergo the same public comment period as the WHPP did before. Look out for invites or a post on social media if you would like to participate.
- **Announcement of Partial Wet Weather Closures (WWC) Starting Mid Jan 2023- McKenzie Boring, Environmental Scientist**
  - With new mandates and soon to be neighbors, we've decided to implement a policy a few years in the making. It will be similar to Hollister's and Carnegie's WWC but based on ground conditions and presence of flowing water rather than on an amount of rain in a given timeframe. This may change based on additional

monitoring or discovering implementation practices don't work in the field. If any changes are made, we'll let you know at another public meeting or through social media.

- The plan is to only have partial closures so options will be available to every rider type even if they come in during a closure. We'll try to open the areas again ASAP or provide reroutes if some areas can be opened earlier. All closures will be posted on social media and the park website. Here is a map of the closure area.



- This policy is part of the Soil Conservation Plan (SCP) and you can provide comments during the public comment period or by emailing [mckenzie.boring@parks.ca.gov](mailto:mckenzie.boring@parks.ca.gov).

- **Zone 1 Seasonal Wetland Exclusion Fence- McKenzie Boring, Environmental Scientist**

- As part of the WWC and comments received by regulatory agencies during the 2016 General Plan and 2022 WHPP public comment periods, we're fencing off a wetland within zone 1 as shown on the map above. There will be seasonal gates for access during the dry season. Cones are out on the trails leading up to the project as warnings.

- **Outreach and Education Updates- Joleen Ossello, State Park Interpreter I**

- Special event outreach included Road to Mammoth, Hangtown Motocross Classic, California State Fair, PC Karting Club Race, Sierra Trek, VORRA Spooktacular and Lilliputian. State Park events held included May and October Safety Week with free safety classes in ROV, ATV and DirtBikeSchool, July 4<sup>th</sup> booth with OHV tour and Visitor Appreciation Day.
- Upcoming events include Headlight Festival for 4x4s and SxSs on Dec. 17<sup>th</sup> and First Day Hike on Jan. 1<sup>st</sup>.
- Senior Park Aide hired to assist part-time, welcome to Nicholas Fox.
- Photo shoots with Parks Senior Photographer completed to use in design of outreach trailer wrap.
- Implemented Environmental Training Center Biome Area workday with staff across all disciplines.

- **Sediment Basic Clean Out – Paul Scharffer, Maintenance Supervisor**

- Each year we remove sediment from a portion of the basins designed to capture sediment within the park. Five out of ten basins were drained and excavated to transfer sediment onto practice tracks, trails, and roads. Material recovered will be added to our yearly addition of rice hulls and sand to tracks.

## Sediment Basin Cleanout

BEFORE DEWATERING



AFTER SCOOPING



- **4x4 Area Rock Crawl Trail – Paul Scharffer, Maintenance Supervisor**

- Temporarily closed now that we have access to larger equipment. We're adding larger boulders to the obstacles then seeding with a straw cover. It will be open again ASAP.

### 4x4 Area Rock Crawl Trail Update

- Currently adding bigger rocks to sections of the trail.
- Adding more seed and straw outside the trail
- Trail will be open again ASAP depending on weather



- **Intermediate MX Track – Paul Scharffer, Maintenance Supervisor**

- Design and layout for the tracks complete, adding irrigation system to reduce need for water truck between regular maintenance. Trenching and conduit installation to be soon.

- **Wet Weather Closure – Paul Scharffer, Maintenance Supervisor**

- Fencing installation in Zone 1 has begun and continue daily, weather permitting.

- **New Staff – Paul Scharffer, Maintenance Supervisor**

- Filled four full-time positions, welcome to new and promoted staff.

- **OHV Update from Supervising State Park Peace Officer, Tony Guzman**

- Red sticker season (open through April 30), operating under the current registration process and to remain in effect through 2024, [Legislation Updates](#).
- California Air Resource Board (CARB) program changes in 2025, [Red Sticker Guidance Document for Riders](#).
- In 2022, CARB implemented a program whereby manufacturers were required to submit and certify the intended purpose of vehicles. As a result, all 2022 off-road motorcycles were labeled “competition only, for use in closed course competition”. Thereby allowing for racing and not recreation, as the vehicles did not meet the standards for registration to operate on public roadways or public lands. Vehicle can be operated year-round on a designated closed course, which for us is the Prairie City Motocross Track (PCMX) used for the Hangtown Motocross Classic and a variety of other sanctioned races. The concession running the PCMX track runs a separate fee structure for practice and competition, [REP Racing](#).
- Increase in questions about what defines (using legislative terms) a recreational off-highway vehicle.
  - Recreational Off-Highway Vehicle (ROV) carries a different designation than a Utility Vehicle (UTV) or Side by Side (SxS), by capable operating speed for public safety reasons.
    - If exceeds 30mph, no longer a UTV, but an ROV. Requires use of helmet and seatbelt.
    - Therefore, newest ROVs with an engine size greater than 1000ccs, under law, are designated as a four-wheel drive vehicle, does not require use of helmet, but also not allowed to operate outside of the 4x4 Area of the park.
- Safety Courses are strongly encouraged and offered by the following organizations at the park.
  - Recreational Off-Highway Vehicle Association ([ROHVA](#)) 866.267.2751
  - ATV Safety Institute ([ASI](#)) 800.887.2887
  - Motorcycle Safety Foundation “*DirtBikeSchool*” ([MSF](#)) 866.267.2751

---

## Q&A:

### **Q: Can we build a tabletop jump on the 4x4 track?**

**A:** Our “mixed-use” 4x4 Area open area serves OHV recreation of different speeds and vehicle types.

Adding a jump in an open area without directional control, signage, or fencing would create an attracted nuisance and could put our visitors at increased risk of accidents and vehicle collisions. Special event promoters like NorCal Rock Racing or VORRA create jumps because their permitted special events are closed course, have EMTs on standby, and the event participants and spectators’ movement onto the course is controlled.

### **Q: Can we change up the MX Practice Track?**

**A:** The track is designed and maintained in a way that serves most users. Currently there is not enough demand or input from users to create a new project to change the track design. If we receive increased feedback from users, we would then consider such a project.

### **Q: Why don’t you have camping available?**

**A:** Though we have similar facilities to other SVRAs who offer dry overnight camping, a significant addition of staffing positions would be necessary to accommodate a change in operational needs, such as overnight camping, which is currently outside of our normal business hours and staffing. We are aware of this desire by our users and would like to offer overnight camping in the future. As of now, overnight camping is only allowed under a special event permit and during our annual Visitor Appreciation Day event.

*Respectfully Submitted on 11/30/2022*  
*By J. Ossello, State Park Interpreter I*